

Successfull combination:  
Reliable functioning and  
first-class materials



**Special Construction Designs**



**Flat penstock**

For openings up to DN 1000 mm. Specially flat in construction, robust stainless steel construction with stainless steel extension as required. Can be dowelled in front of or behind wall openings, both sides sealed. Simple installation, very durable, operationally reliable.

Material: stainless steel, bearings from Cu/Zn alloy, selected resistant ring seal.



**Flow valve**

DN 150 mm to DN 250 mm  
For flooding of tanks by high groundwater level as safeguard against floating. With standard wall crests for force-locking and waterproof installation in concrete floor.

Material: stainless steel with removable lid and replaceable seal

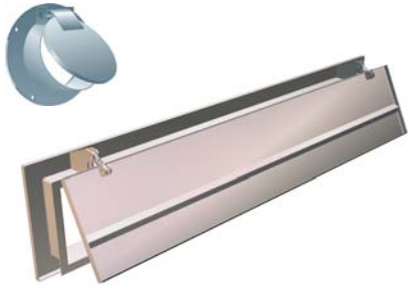
Max. impound:  
10.00 m WS (1 bar).  
Opening pressure:  
0.05 WS (5 mbar)



**Float-controlled outlet gate**

DN 100 to DN 400 mm  
Opens, throttles and closes in- and outflows. Limits the under-water level to a given maximum height e.g. in a pump sump. Can be dowelled.

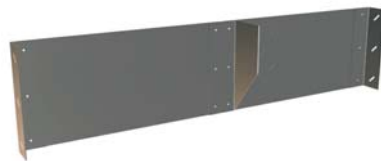
Max. impound: 5 m WS (0.5 bar).  
Material: stainless steel, bearings from Cu/Zn alloy, proven seal.  
Fittings: depending on pressure, one or two floats. If required, with DIN-flange.



**Backwater gates**

DN 200 to DN 1000 mm  
Allows water to flow in one direction. Easily opened and secure in closing due to flexible bearings. Can be dowelled; if required, with DIN-flange.

Material: stainless steel, bearings from Cu/Zn alloy, proven cover sealing.



**Baffle plates**

Designed for small installation openings. Detains floating solids effectively. Attached from above.

Material: stainless steel



**Stainless steel crests**

adjustable in height – on request



Technische Änderungen vorbehalten.